

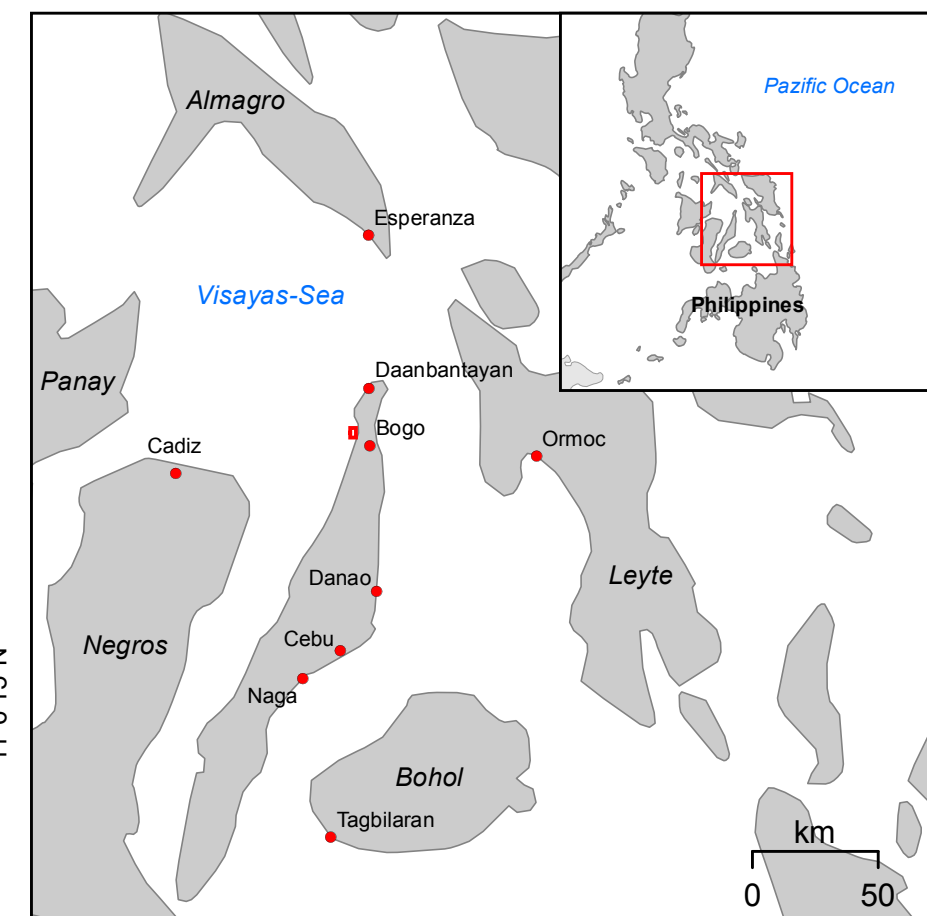
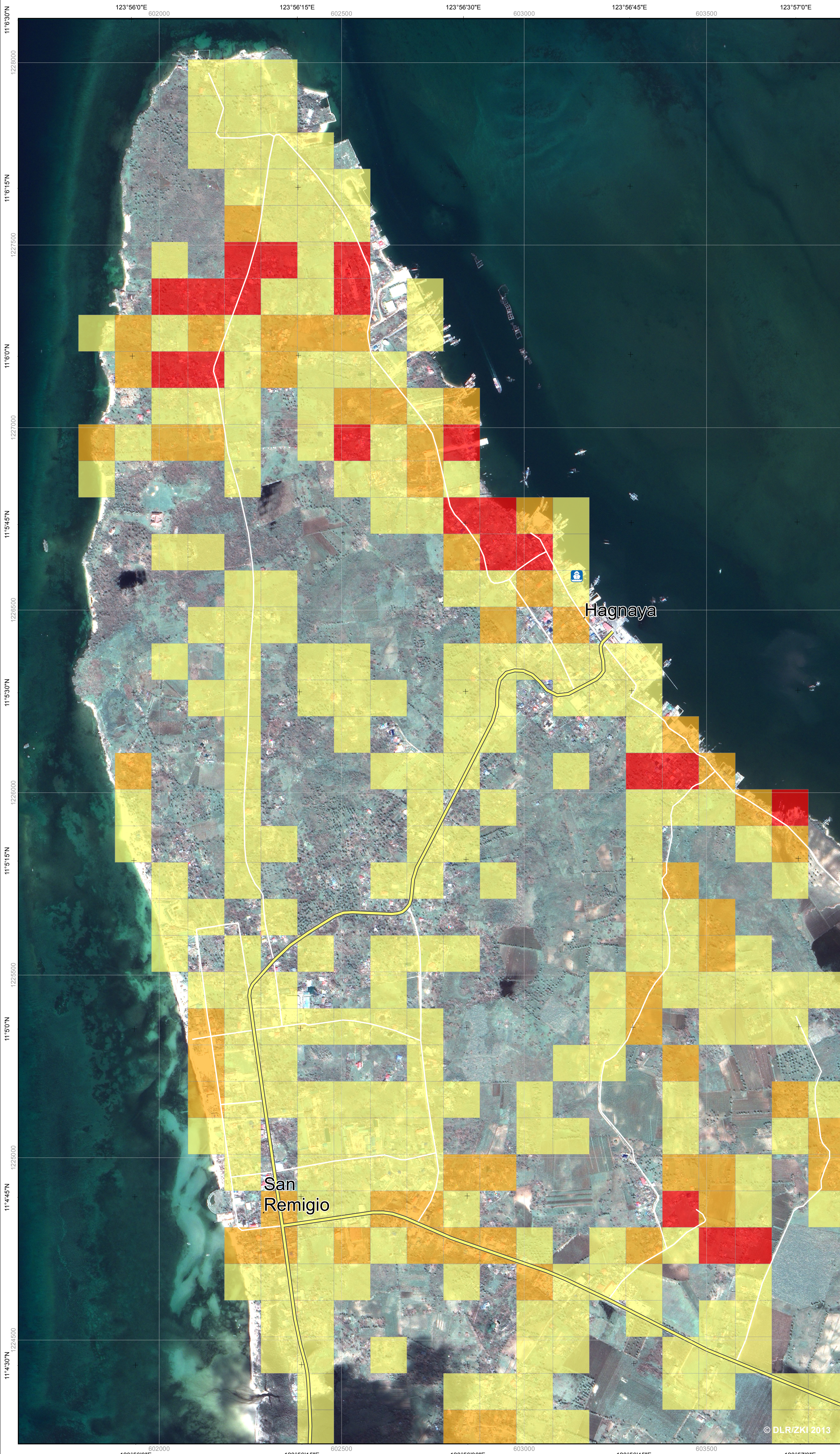


Philippines - San Remigio (North)

1:5,000

Situation as of November 14, 2013 - Damage Assessment Map - Detail

ZKI-DE Activation No. 011
Product No. 06
Version No. 02



Legend



Infrastructure

- Primary road
- Secondary road / Track
- Harbour

Damage Assessment

- 9 - 22 number of damaged buildings per 100m x 100m grid cell
- 4 - 8
- 1 - 3

Interpretation

On Friday morning November 8, at 4:40 local time typhoon Haiyan (category 5 on the Saffir-Simpson scale) made landfall on the Philippines. From the islands Samar and Leyte the typhoon continued west northwestwards with wind speeds of more than 300 km/h. Typhoon Haiyan triggered severe storm surges contributing to large-scale devastations. Officials estimate more than 2,300 people dead and hundreds of thousands homeless.

The map shows the situation around the city of San Remigio. Detailed damage assessment has been conducted by visual interpretation based on pre- and post-event Pléiades satellite data acquired on September 02, 2013 at 2:22 am (UTC) and November 14, 2013 at 2:10 am (UTC) as well as post-event WorldView-1 data acquired on November 11, 2013 at 2:14 am (UTC).

The post-event image of November 14, 2013 serves as backdrop.

Please note that some areas could not be analyzed due to cloud coverage. Buildings and roads might not be fully captured due to data constraints.

Cartographic Information

0 250 500 Meters

Local projection: UTM Zone 51N, Datum: WGS 1984
Geographic projection: Lat/Lon (DMS), Datum: WGS 84
Scale: 1:5,000 for A1 prints.

Data Sources

- Pléiades (0.5m) © CNES 2013, Distribution Astrium Services / SPOT Image S.A., all rights reserved
- WorldView-1 (0.5m) © European Space Imaging 2013
- Vector data © DLR/ZKI 2013 © OpenStreetMap contributors 2013

Framework

The products elaborated for this Rapid Mapping Activity are realised to the best of our ability, within a very short time frame, optimising the material available.

All geographic information has limitations due to the scale, resolution, date and interpretation of the original source materials. No liability concerning the content or the use thereof is assumed by the producer.

The ZKI crisis maps are constantly updated. Please make sure to visit <http://www.zki.dlr.de> for the latest version of this product.

Map produced November 14, 2013 by ZKI
Map updated November 15, 2013
© DLR/ZKI 2013

zki@dlr.de
<http://www.zki.dlr.de>



Center for Satellite Based Crisis Information
- Emergency Mapping & Disaster Monitoring -
a service of DFD

German Remote Sensing Data Center
German Aerospace Center

