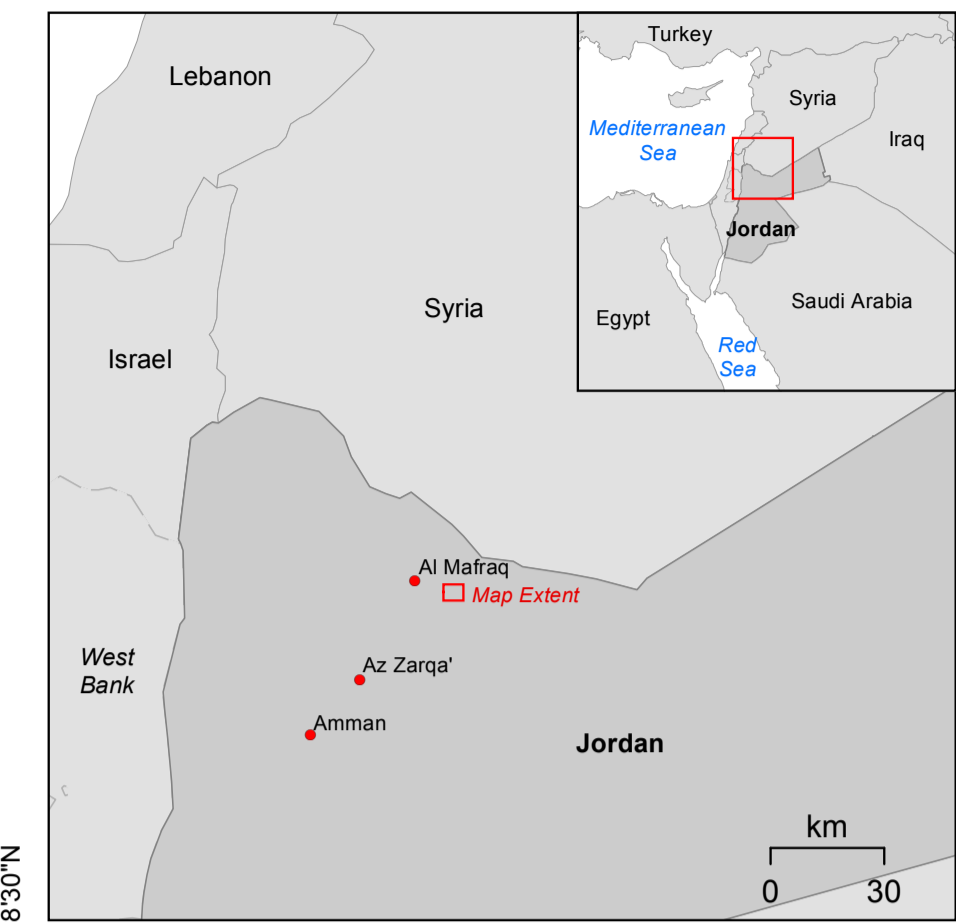
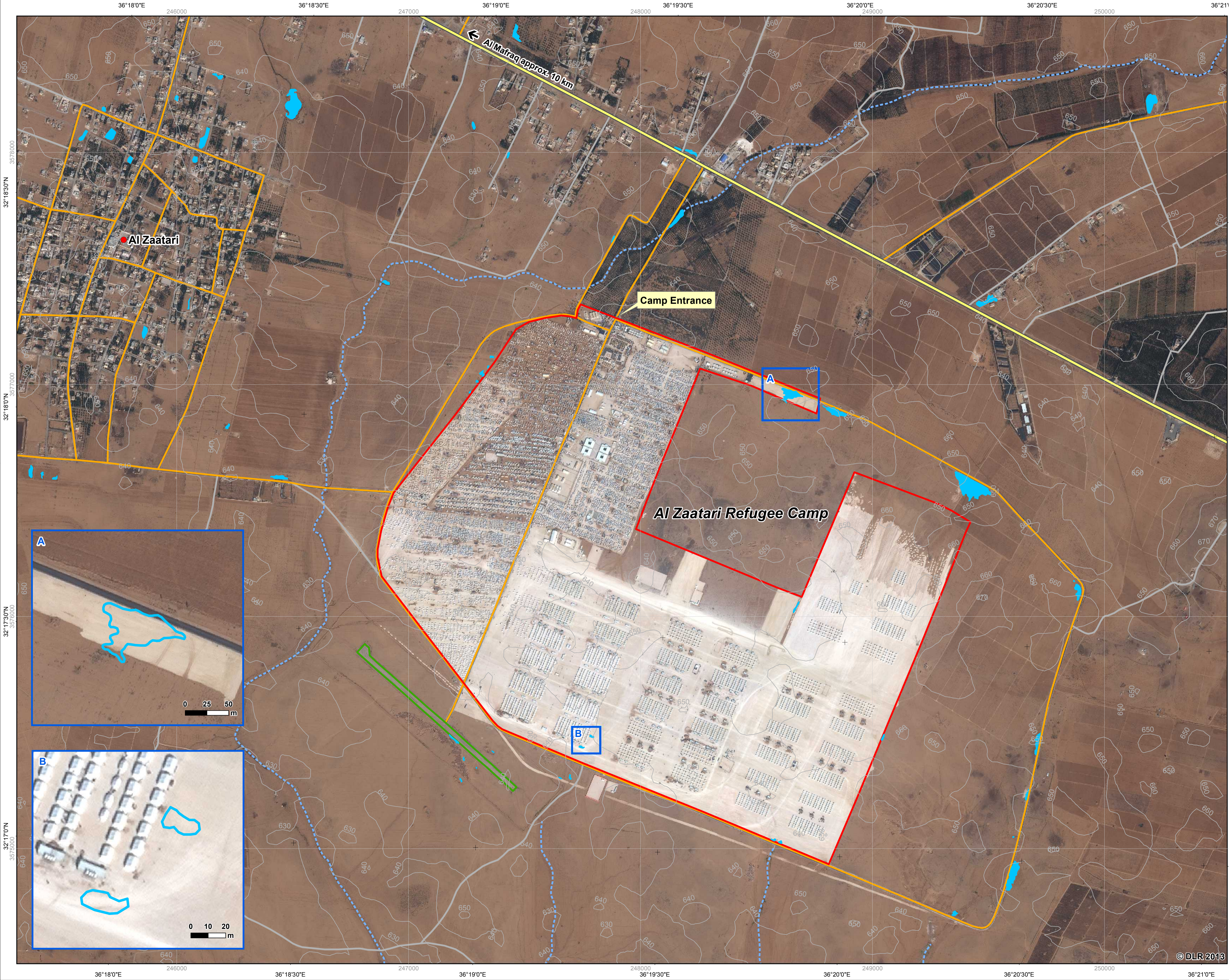


# JORDAN - Al Zaatari

## Flood as of January 10, 2013 - Disaster Extent Map

1:7,500

ZKI-DE Activation No. 001  
Product No. 03  
Version No. 01



### Legend

- |   |  |  |
|---|--|--|
|   |  |  |
| Settlement  | Tents  | Agriculture  |
|   |  |  |
| Population<br>● Settlement  | Refugee Camp<br>□ Camp extent as of January 03, 2013 | Analysis Layer<br>■ Observed water extent as of January 10, 2013<br>■ Observed water extent as of January 10, 2013 (displayed in zoom box) |
|   |  |  |
| Infrastructure<br>— Primary road<br>— Secondary road<br>— Tertiary road/<br>Cart track<br>— Runway area | Elevation<br>— Contour line                          | Hydrology<br>- - - Intermittent river  |

### Interpretation

The Al Zaatari refugee camp in Jordan is situated approx. 12 km from the Syrian border and in close proximity to the city of Al Mafraq (10 km). Due to heavy rainfall in the region parts of the Zaatari camp are affected by flooding. The map shows the flood situation derived by semi-automatic image analysis of TerraSAR-X data acquired on January 10, 2013 at 03:38:49 UTC. Furthermore basic reference information, digitized on the basis of WorldView-2 satellite data acquired on January 03, 2013, at 08:52:52 UTC, is depicted. The contour lines were derived from ASTER GDEM 2 data (vertical accuracy +/- 6m). For a more detailed view on the flood situation, parts of the camp area are also shown in the zoom boxes. The results of the image interpretation and analysis have not been validated in the field.

WorldView-2 satellite data acquired on January 03, 2013, is used as backdrop. Please note that flood waters in settlement areas might not be fully captured and the water extent might be underestimated due to sensor characteristics. Thus especially shallow water bodies might not be fully captured.

### Cartographic Information

0 100 200 400 600 Meters  
Local projection: UTM Zone 37N, Datum: WGS 1984  
Geographic projection: Lat/Lon (DMS), Datum: WGS 84  
Scale: 1:7,500 for A1 prints.

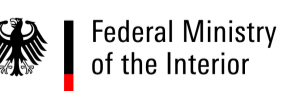
### Data Sources

WorldView-2 (0.5m) © European Space Imaging 2013  
TerraSAR-X/ © 2013 German Aerospace Center  
TanDEM-X (1.5m) (DLR), 2013 Astrium Services/  
Infoterra GmbH  
ASTER GDEM 2 (30m) © Product of METI and NASA, 2010  
Vector Data © DLR 2013

### Framework

The products elaborated for this Rapid Mapping Activity are realised to the best of our ability, within a very short time frame, optimising the material available. All geographic information has limitations due to the scale, resolution, date and interpretation of the original source materials. No liability concerning the content or the use thereof is assumed by the producer. The ZKI crisis maps are constantly updated. Please make sure to visit <http://www.zki.dlr.de> for the latest version of this product.

Map produced January 10, 2013 by ZKI  
© DLR 2013  
[zki@dlr.de](mailto:zki@dlr.de)  
<http://www.zki.dlr.de>



**Center for Satellite Based Crisis Information**  
— Emergency Mapping & Disaster Monitoring —  
a service of DFD

German Remote Sensing Data Center  
German Aerospace Center



© DLR 2013