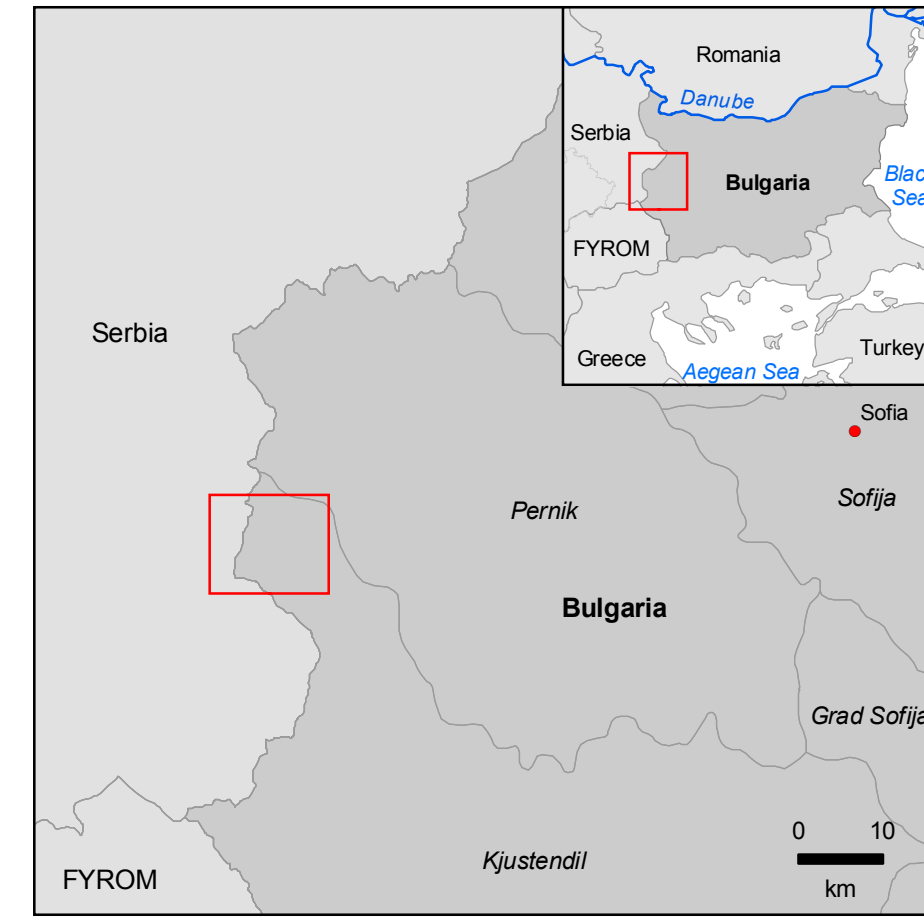


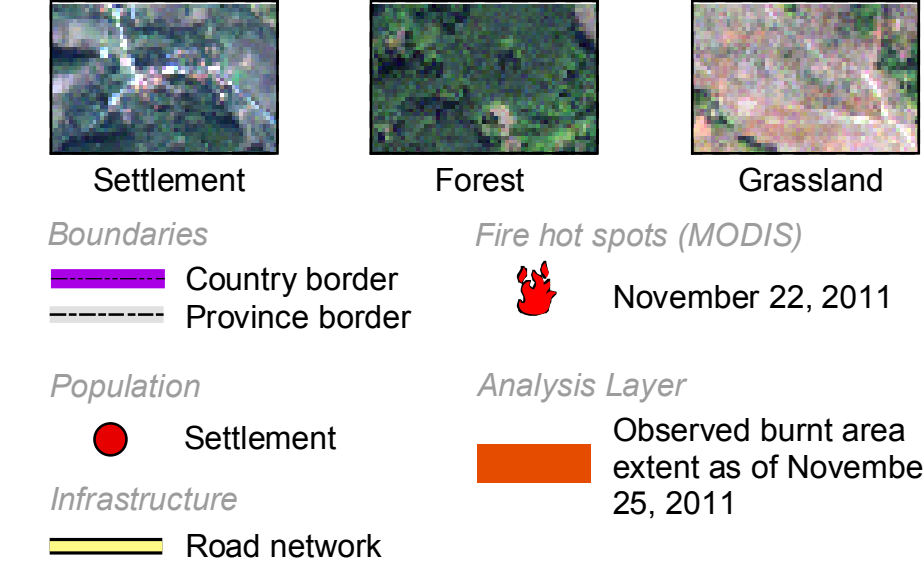
Bulgaria - Kjustendil Fires as of November 25, 2011 Damage Assessment Map - Detail Scale: 1:20,000

Land cover class	Burnt area (ha)	Burnt area (%)
Broad-leaved forests	78.3	13.1
Coniferous forest	0.6	0.1
Mixed forest	2.8	0.5
Natural grassland	430.3	72.1
Pastures	4.7	0.8
Transitional woodland shrub	75.8	12.7
Complex cultivation patterns	4.0	0.7
Total (map extent)	596.5	100

Location Diagrams



Legend



Interpretation

On November 21, 2011, forest fires were reported near the village of Sredorek, Kjustendil province (western Bulgaria) in a mountainous area close to the Serbian border. The map shows the burnt area extent on the Bulgarian site derived by semi-automatic image analysis of RapidEye data (6 m resolution) acquired on November 25, 2011. As derived from the analysis of the satellite data an area of about 600 hectares mainly covered by natural grassland burnt down up to this date. An overview of the affected land cover types is given in the table. Furthermore, a more detailed view of the detected burnt area is shown in the zoom box. The fire hot spots (derived by the analysis of MODIS satellite data) show the location of active fires at November 22, 2011. Radiometrically enhanced RapidEye imagery, acquired on October 21, 2011 serves as backdrop.

Cartographic Information

0 0,5 1 1,5 2 km
Local projection: UTM Zone 34N, Datum: WGS 1984
Geographic projection: Lat/Lon (DMS), Datum: WGS 84
Scale: 1:20,000 for DIN A1 prints.

Data Sources

RapidEye (6 m) © RapidEye AG 2011
Vector Data © DLR 2011
© ESRI 2002
© EEA 2006
© OpenStreetMap 2011 (modified by DLR 2011)

Framework

The products elaborated for this Rapid Mapping Activity are realised to the best of our ability, within a very short time frame, optimising the material available. All geographic information has limitations due to the scale, resolution, date and interpretation of the original source materials. No liability concerning the content or the use thereof is assumed by the producer. The research leading to these results has received funding from European Community's Seventh Framework Programme (FP7/2007-2013) under grant agreement n° 218802. The ZKI crisis maps are constantly updated. Please make sure to visit <http://www.zki.dlr.de> for the latest version of this product. Map produced November 25, 2011 by ZKI © DLR 2011 zki@dlr.de <http://www.zki.dlr.de>



Center for Satellite Based Crisis Information
– Emergency Mapping & Disaster Monitoring –
a service of DFD

German Remote Sensing Data Center
German Aerospace Center
DLR

