

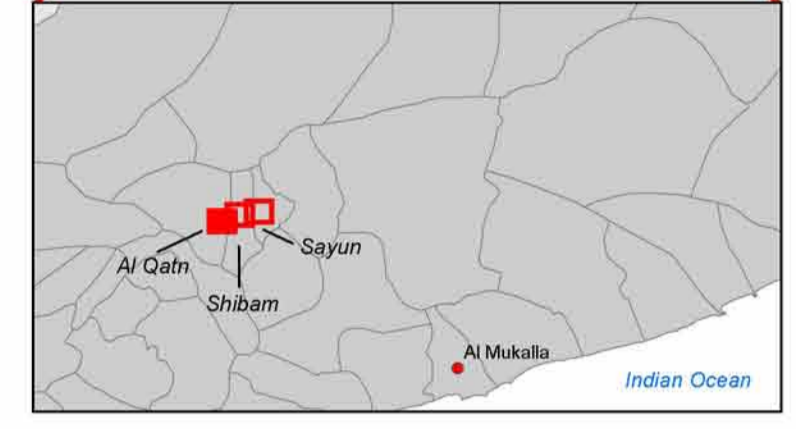
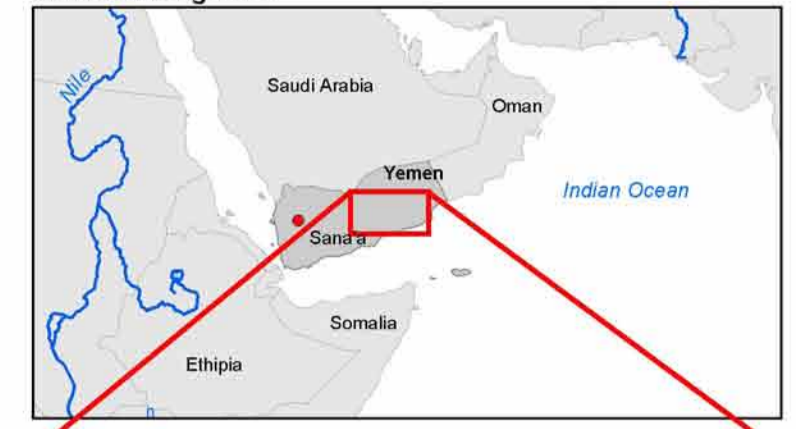
48°28'0"E 230000 48°30'0"E 235000 48°32'0"E 240000 48°34'0"E 245000 48°36'0"E

GLIDE Number: FL-2008-000201-YEM

Yemen Al Qatn - Damage Map

Scale: 1:25,000

Location Diagrams

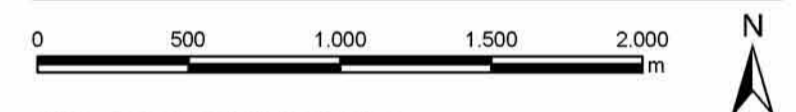


Legend

	Satellite Image
	Settlement
	Vegetation/ Agriculture
	Bare soil
	Population
	Al Qatn
	Town/Village
	Infrastructure
	Major road
	Boundaries
	District border
	Al Qatn
	District
	Damage
	Area affected by flash flood
	Damaged road

Interpretation

In late October 2008 the third tropical cyclone of the season over the Indian Ocean hit Yemen and caused heavy rains and flash floods on October 24 and 25. One of the most affected regions is the Wadi Hamdramot and the area around the town of Al Qatn at the western gate of the wadi which is shown on the map. The analysis is based on a comparison of SPOT-5 imagery of November 11, 2008 and November 2, 2008. This damage map was generated in the frame of the "International Charter Space and Major Disasters" to support the assessment and coordination activities of the regional UN office OCHA ROMENACA.



Projection & Grid Information

Reference Grid	Geographic Grid
Projection: UTM Zone 39 North	Geographic (DMS)
Spheroid: WGS 84	WGS 84
Datum: WGS 84	WGS 84

Satellite Information

Satellite:	SPOT-5
Pixel Size:	2.5 m
Acquisition Date:	November 02, 2008
Georeferencing:	Georeferenced
Accuracy:	±10 metres RMSE

Credits & Copyright

- SPOT-5 © CNES 2008
- Districts © Yemen Ministry of Local Administration
- Infrastructure © DLR, derived from Landsat-7 ETM imagery

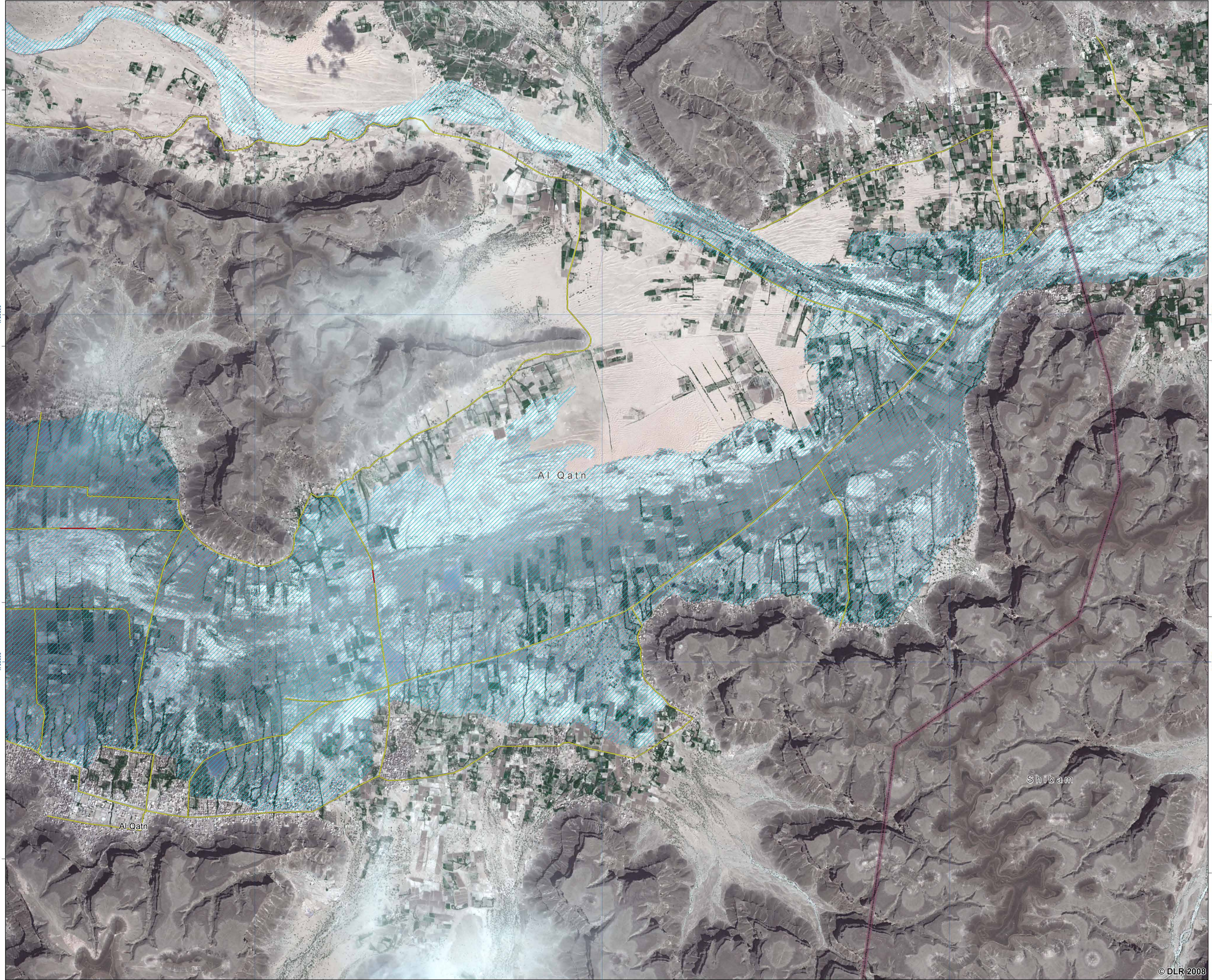
Date:	November 3, 2008
Edition:	1.0
Print Dimensions @ 1:25,000	ISO A1 size (841 x 594mm)

Respond and its suppliers have attempted to provide mapping that is as accurate as is available with the source material, however all geographic information has limitations due to the scale, resolution, date and interpretation of the original source materials. Accordingly, Respond maps are distributed as is, without any warranty, either expressed or implied, including but not limited to warranties of suitability for a particular purpose or use. The entire risk as to the results of the use of these data is assumed by the user and the supplier accepts no liability for any loss, damage or inconvenience caused as a result of reliance on the mapping.



User coordination / Map generation

Data provision



48°28'0"E 230000 48°30'0"E 235000 48°32'0"E 240000 48°34'0"E 245000 48°36'0"E

© DLR 2008