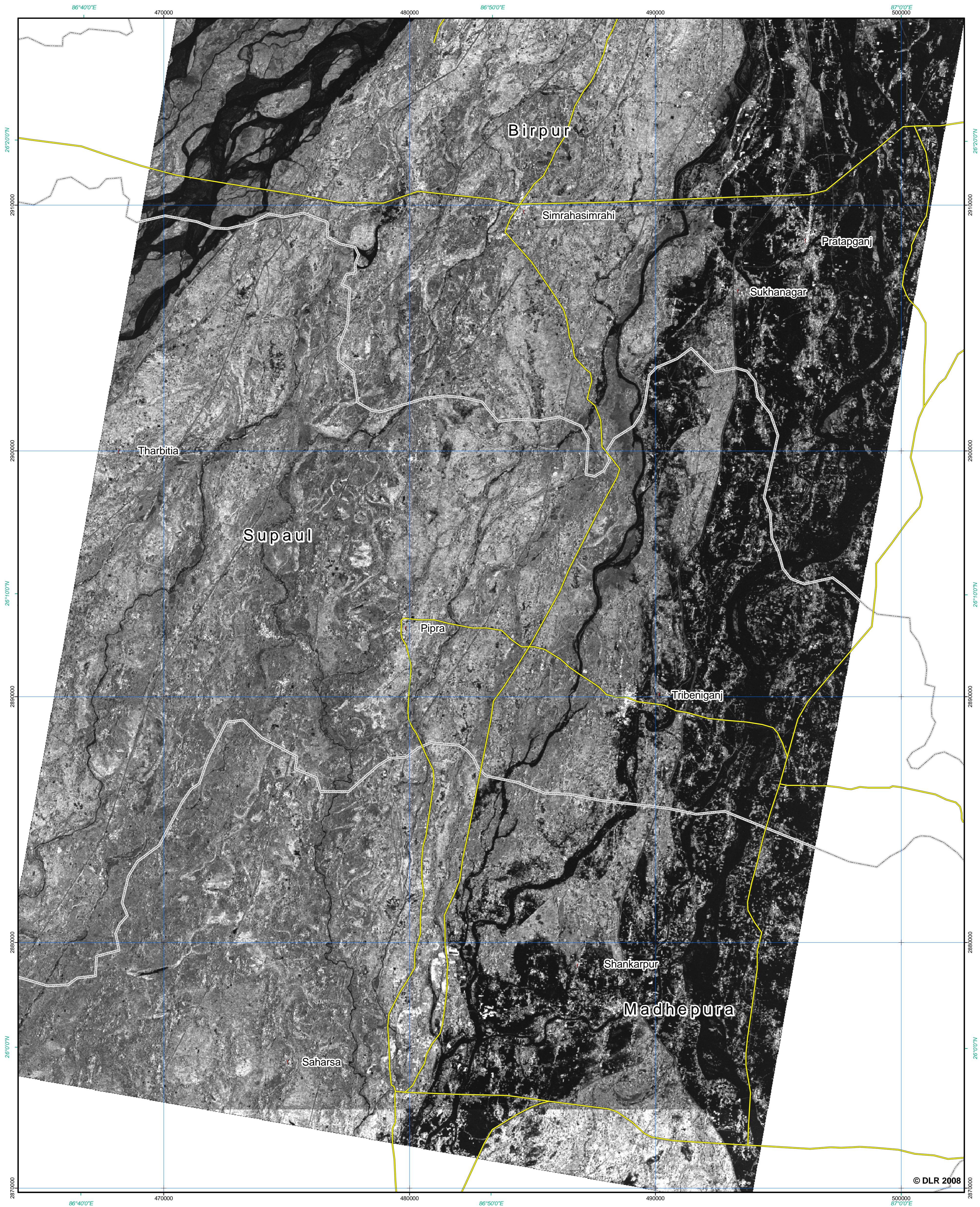


Nepal/India - Embankment breach as seen on August 30th, 2008 - Southern part 1:75.000



© DLR 2008

Center for Satellite Based Crisis Information
 – Emergency Mapping & Disaster Monitoring –
 a service of DFD

German Remote Sensing Data Center
 German Aerospace Center

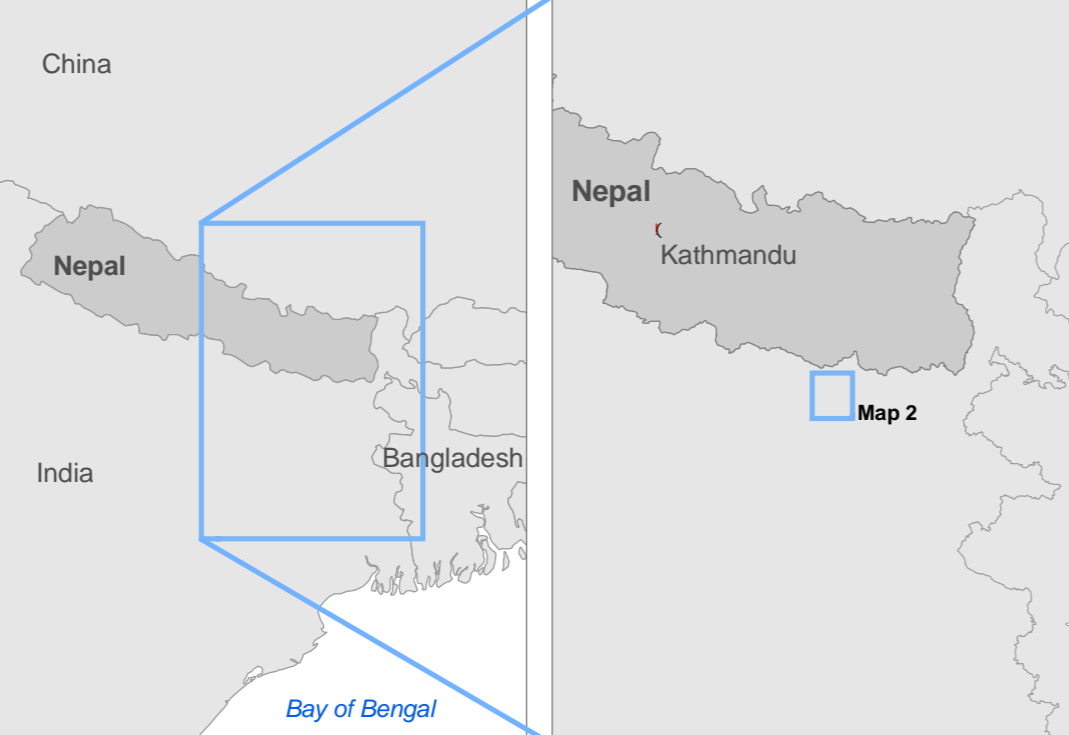
Map created September 1, 2008 by ZKI@DLR.DE

Processing/Analysis

Image processing and map creation by DLR:

- Derivation of flooded areas from TerraSAR-X
- Vector data set is not complete

For more information visit: <http://www.zki.dlr.de>



Legend

Koshi River	Village/Town	Agricultural area
Boundaries	Administrative Boundaries	
Infrastructure	Roads	
Population	Town/Village	

Interpretation

On 18th August, 2008 the Koshi River breached an embankment causing flooding in the Sunsari district as well as further South in the Supaul district of Bihar in India. It also inundated the districts of Madhepura, Araria, Purnea and Saharsa. After the breach, the River Koshi, which separates India from Nepal, changed its course resulting in more than 250,000 destroyed homes in 1,600 villages and a total of 3 million affected people. Damaged roads and flooded railway tracks have hampered relief efforts. The map illustrates the flooded area south of the breached embankment with many flooded settlements, roads and agricultural land. The analysis is based on TerraSAR-X data acquired on 30 August, 2008.

Data Sources

Vector data © DLR 2008, National Geospatial Intelligence Agency 2007, GADM 2008
 TerraSAR-X © German Aerospace Center (DLR) 2008
 Commercial exploitation rights: infoTerra

Scale

0 1 2 3 4 5 km

Scale: 1:75.000 for DIN A1 printing

Reference coord. system: [Geographic coord. info:](#)
 Projection: UTM Zone 45 N [Geographic \(DMS\)](#)
 Spheroid: WGS 84 [WGS 84](#)
 Datum: WGS 84 [WGS 84](#)

SAR-HQ **TERRASAR**