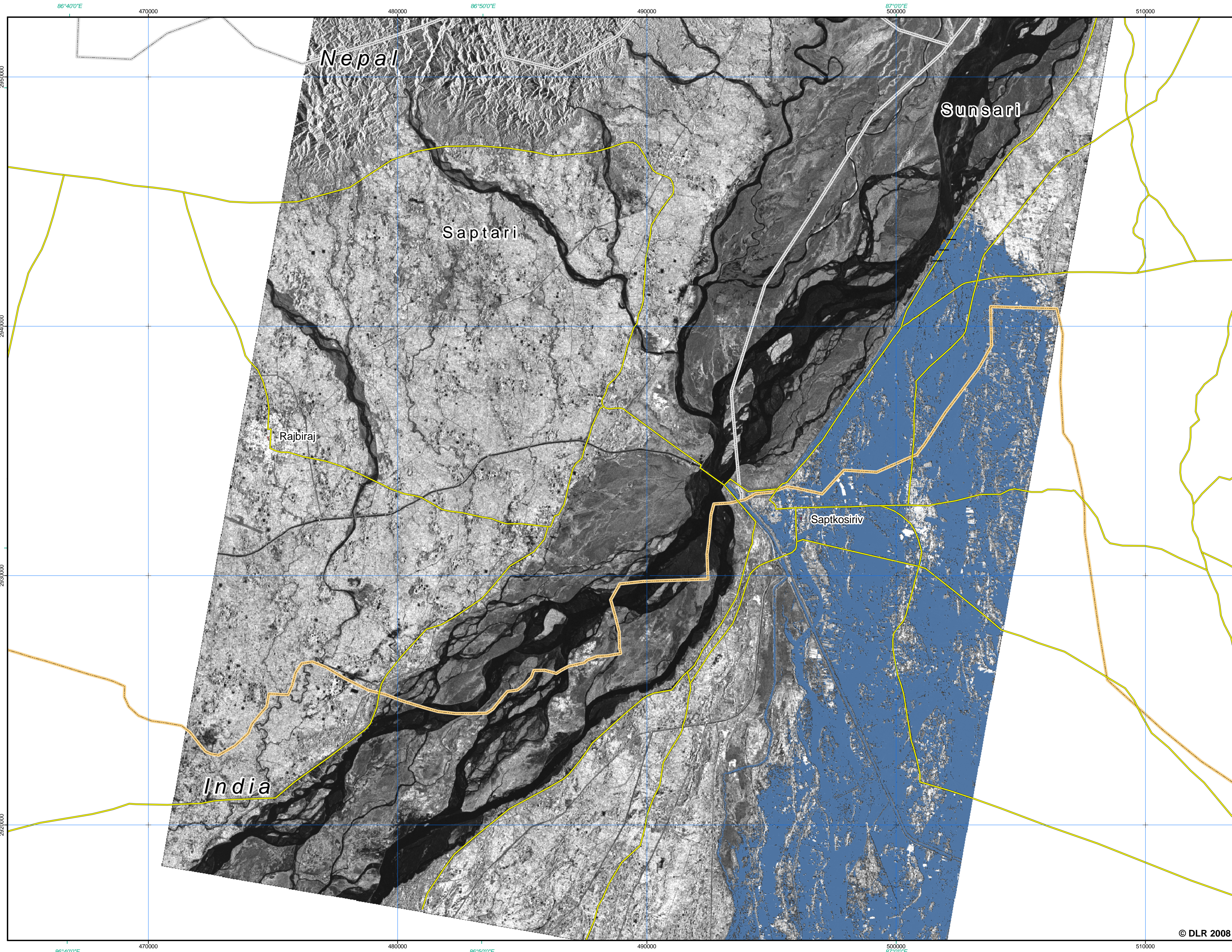
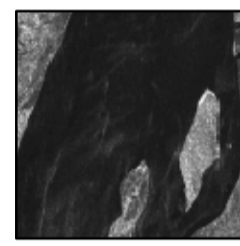
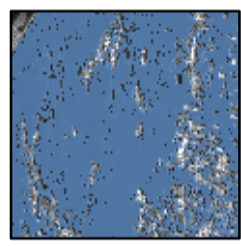
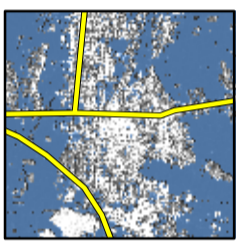



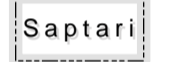



# Nepal - Embankment breach as seen on August 30th, 2008 - Northern part

1:75.000



**Legend**

		
Koshi River	Flooded area	Affected infrastructure

	National Border
	Administrative boundaries
	Roads
	Embankment breach
	Town/Village

**Interpretation**

On 18th August, 2008 the Koshi River breached an embankment causing flooding in the Sunsari district as well as further South in the Supaul district of Bihar which is situated 7 kilometres downstream in India. It also inundated the districts of Madhepura, Araria, Purnea and Saharsa. After the breach, the River Koshi, which separates India from Nepal, changed its course resulting in more than 250,000 destroyed homes in 1,600 villages and a total of 3 million affected people. Damaged roads and flooded railway tracks have hampered relief efforts.

The map illustrates the flooded area south of the breached embankment with many flooded settlements, roads and agricultural land. The analysis is based on TerraSAR-X data acquired on 30th August, 2008.

**Scale**


0 1 2 3 4 km

Scale: 1:75.000 for DinA1 printing

Reference coordinate system: [Geographic coord. info:](#)  
 Projection: UTM Zone 45 N [Geographic \(DMS\)](#)  
 Spheroid: WGS 84 [WGS 84](#)  
 Datum: WGS 84 [WGS 84](#)

**Data Sources**

Vector data © German Aerospace Center (DLR) 2008  
 National Geospatial Intelligence Agency 2007 (Towns)

TerraSAR-X © German Aerospace Center (DLR) 2008  
 Commercial exploitation rights: 

**Processing/Analysis**

Image processing and map creation by DLR:

- Derivation of flooded areas from TerraSAR-X
- Vector data set is not complete

Map created August 31, 2008 by zki@dlr.de  
 Map updated September 1, 2008 by zki@dlr.de  
 For more information visit: <http://www.zki.dlr.de>