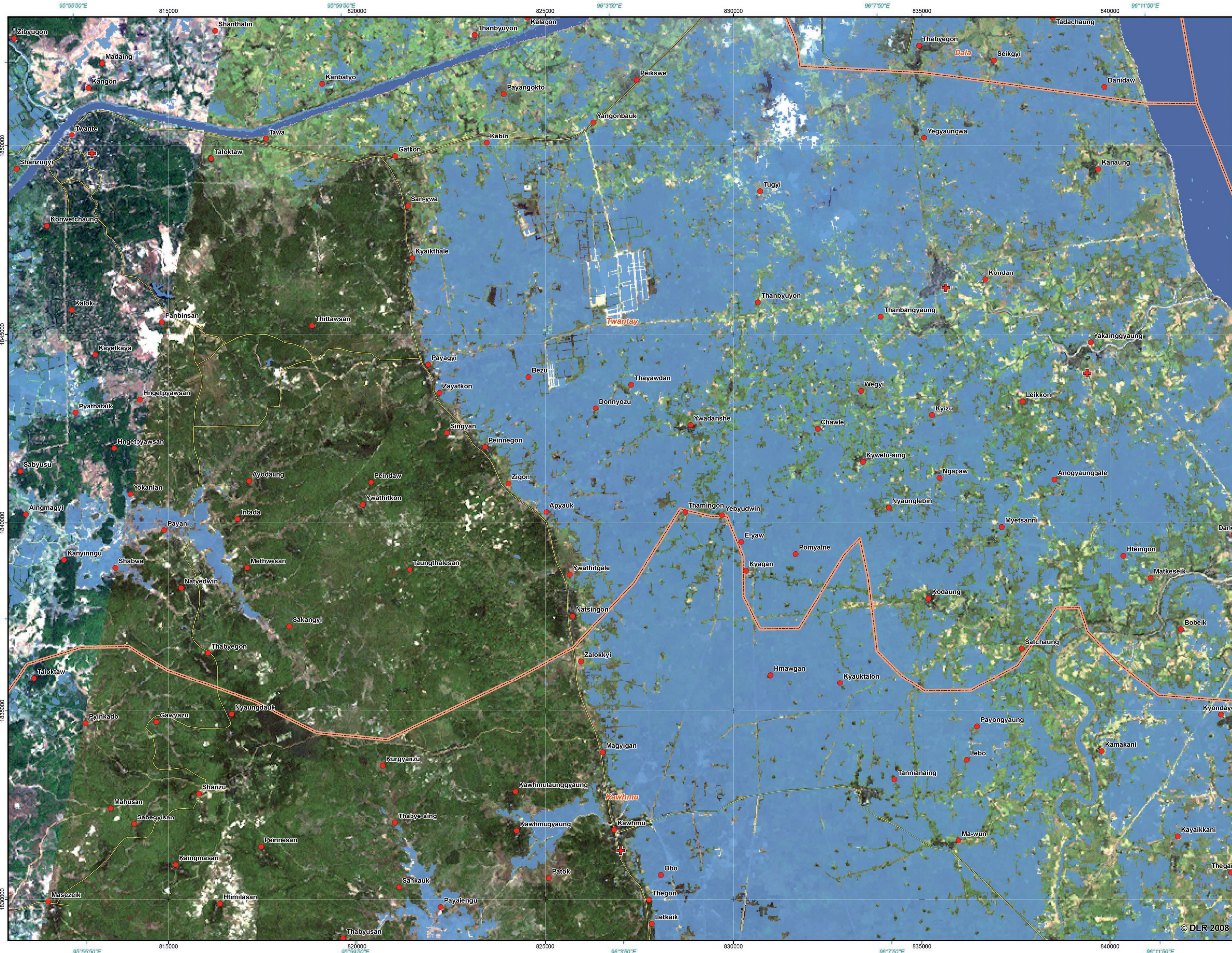
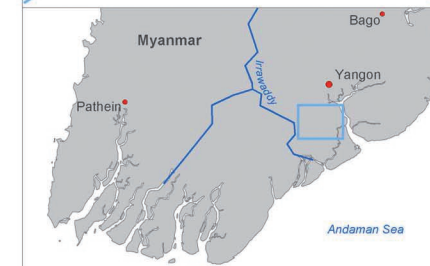




# Myanmar - Cyclone "Nargis" - Flood Extent May 14, 2008 - Sheet 4: Twante Region

1:50,000



## Legend



**Flood Situation:**  
 Pre-flood water surface (November 7, 2000)  
 Flood water surface (May 14, 2008)

**Population:**  Towns/Villages  
**Boundaries:**  Township borders

**Infrastructure:**  
 Roads  
 Health Facilities

## Interpretation

On May 2nd, 2008 the tropical cyclone "Nargis" hit the coast of Myanmar southwest of the capital Yangon causing major damages.  
 On May 9th a first analysis of the flood situation derived from TerraSAR-X data acquired on May 6th was generated. This second analysis shows the inundated areas derived from TerraSAR-X radar satellite imagery of May 14th and the pre-disaster water level derived from LANDSAT-7 ETM of November 7th, 2000 around Twante.  
 Due to heavy rainfall the water level did not change significantly within the 8 days between both images. As mentioned for the first analysis inundated areas may also contain regions which were covered by water before the disaster due to the prevalence of wet-rice cultivation. The results are superimposed on LANDSAT-7 ETM imagery of November 7, 2000.



Reference coordinate system: [Geographic coord. info:](#)  
 Projection: UTM Zone 46 N [Geographic \(DMS\)](#)  
 Spheroid: WGS 84 [WGS 84](#)  
 Datum: WGS 84 [WGS 84](#)

**Data Sources**  
 LANDSAT-7 ETM © USGS 2000  
 TerraSAR-X © German Aerospace Center (DLR) 2008  
 Commercial exploitation rights: [infoterra](#)  
 Vector data © Vmap (Towns/Villages), MIMU/WHO (Health Facilities, Boundaries), KEYOBS (Settlements) and derivation from LANDSAT-7 ETM (Roads, Railroads)

**Processing/Analysis**  
 Image processing and map creation by DLR:  
 - Derivation of flooded areas from TerraSAR-X  
 - Derivation of normal water levels from LANDSAT-7 ETM imagery of 2000  
 - Roads digitized from LANDSAT-7 ETM imagery of 2000  
 Map created May 16, 2008 by ZKI@DLR.DE  
 The map was created in cooperation with RESPOND.



GLIDE number: TC-2008-000057-MMR