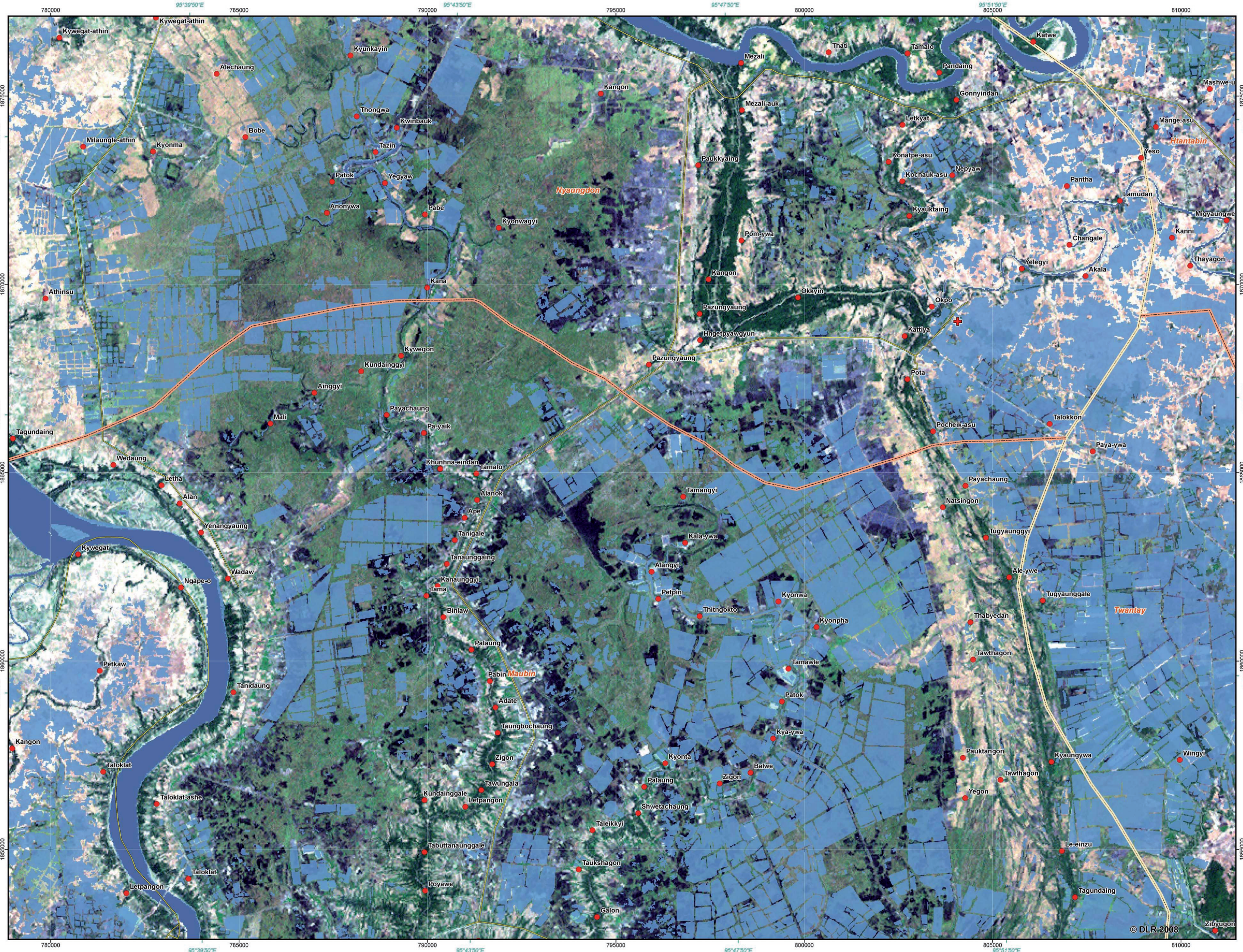
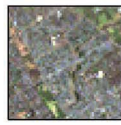


# Myanmar - Cyclone "Nargis" - Flood Extent May 14, 2008 - Sheet 1: Mezali Region


1:50,000



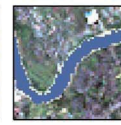
### Legend



Settlement



Agriculture



Riverbed

**Flood Situation:**

- Pre-flood water surface (November 7, 2000)
- Flood water surface (May 14, 2008)

**Population:**

- Towns/Villages

**Boundaries:**

- Division boundaries
- Township borders

**Infrastructure:**

- Roads
- + Health Facilities

### Interpretation

On May 2nd, 2008 the tropical cyclone "Nargis" hit the coast of Myanmar southwest of the capital Yangon causing major damages.

On May 9th a first analysis of the flood situation derived from TerraSAR-X data acquired on May 6th was generated. This second analysis shows the inundated areas derived from TerraSAR-X radar satellite imagery of May 14th and the pre-disaster water level derived from LANDSAT-7 ETM of November 7th, 2000 around Mezali.

Due to heavy rainfall the water level did not change significantly within the 8 days between both images. As mentioned for the first analysis inundated areas may also contain regions which were covered by water before the disaster due to the prevalence of wet-rice cultivation. The results are superimposed on LANDSAT-7 ETM imagery of November 7, 2000.

Scale: 1:50,000 for DIN A1 printing

Reference coordinate system: Geographic coord. info:

Projection: UTM Zone 46 N Geographic (DMS)  
 Spheroid: WGS 84 WGS 84  
 Datum: WGS 84 WGS 84

### Data Sources

LANDSAT-7 ETM © USGS 2000  
 TerraSAR-X © German Aerospace Center (DLR) 2008  
 Commercial exploitation rights: infoterra

Vector data © Vmap (Towns/Villages), MIMU/WHO (Health Facilities, Boundaries), KEYOBS (Settlements) and derivation from LANDSAT-7 ETM (Roads, Railroads)

### Processing/Analysis

Image processing and map creation by DLR:

- Derivation of flooded areas from TerraSAR-X
- Derivation of normal water levels from LANDSAT-7 ETM imagery of 2000
- Roads digitized from LANDSAT-7 ETM imagery of 2000

Map created May 16, 2008 by ZKI@DLR.DE  
 The map was created in cooperation with RESPOND.