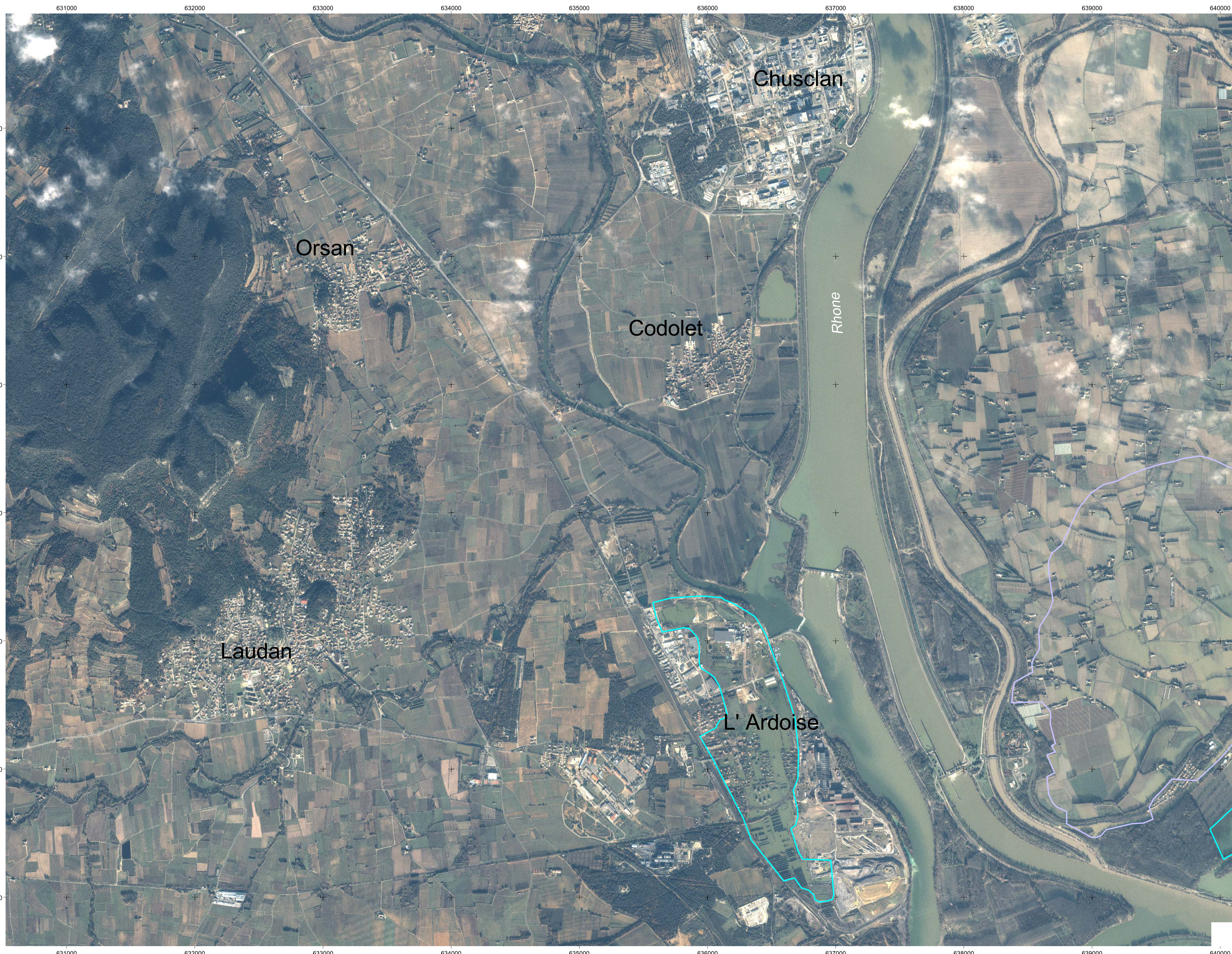
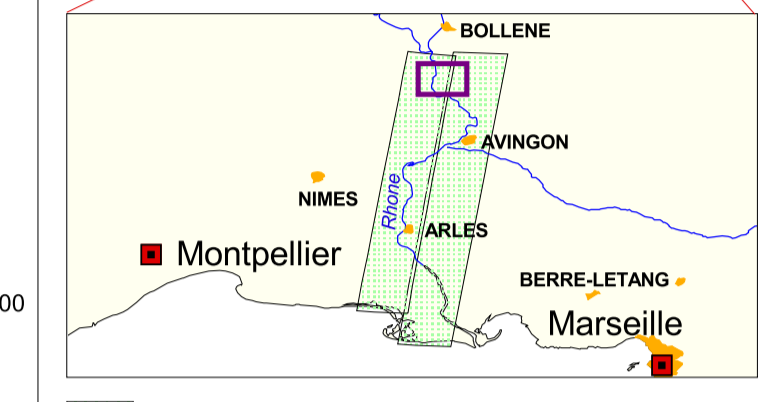
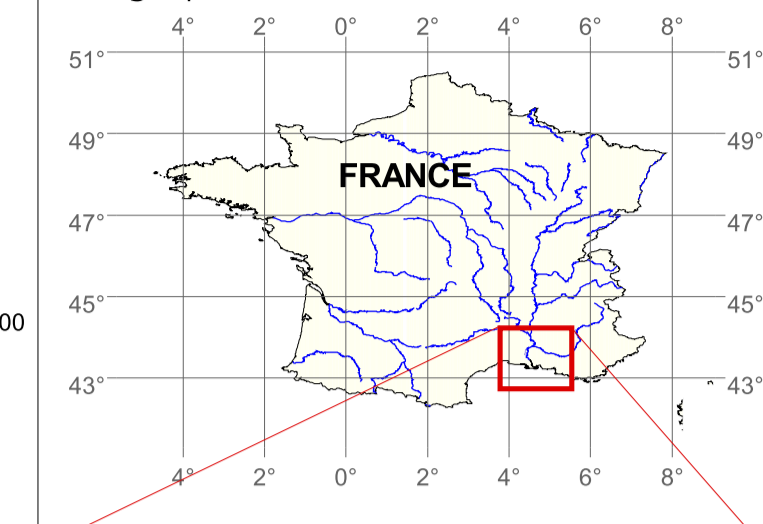


Mapping of flooded areas based on high spatial resolution IKONOS imagery, Laudun-area, France

Ikonos data acquired on 06.12.2003



Geographic overview:



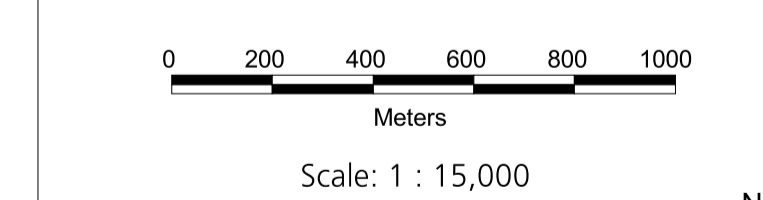
Ikonos paths acquired on 06.12.2003
 northern area analysed (Laudun)

Legend:

The following features characterise the image components visible in the satellite map displayed to the left.

- Forest
- Pasture
- Agricultural fields
- River
- River, heavy sediment
- Quarry pond
- Flooded fields
- Settlement
- Industry
- Mining
- Clouds
- Still partially flooded area
- Flooded area

Scale of satellite map:



Projection: UTM, zone 31 north
Datum: WGS 84

IKONOS images provided by:



Satellite data processing and analysis by:

